

# CANTON HIGH SCHOOL

## 2025 - 2026 SCHOOL PROFILE

COLLABORATION + CURIOSITY + PERSEVERANCE

76 Simonds Avenue  
Canton, CT 06019  
p: 860.693.7711  
f: 860.693.5855

CEEB 070-115  
www.cantonschools.org



### DISTRICT OFFICIALS

Dr. Jordan E. Grossman, *Superintendent of Schools*  
Mr. Jon Bishop, *Assistant Superintendent*  
Mrs. Barbara McLean, *Director of Personnel Services*

### DEPARTMENT OF SCHOOL COUNSELING

Mrs. Deborah Schwager, *Director*  
Mrs. Jennifer Theodoratos, *Counselor*  
Mrs. Kerri Petti, *Counselor*  
Mrs. Ann Beman, *Department Secretary*

### SCHOOL OFFICIALS

Mr. Andrew DiPippo, *Principal*  
Dr. Ruth Kidwell, *Assistant Principal*

## CANTON HIGH SCHOOL

Is committed to the pursuit of lifelong learning with the highest standard of integrity, respect for individual points of view, and a broad understanding of community and global diversity, promoted through curiosity, collaboration, and perseverance.

## THE SCHOOL AND COMMUNITY

Canton, Connecticut, is a suburban community of around 10,000 located fifteen miles west of the city of Hartford. Part of the historic and beautiful Farmington Valley, residents commute to work in large industries, especially defense and insurance, in the capital area. Many others are employed in numerous small business enterprises in the community. Canton was ranked one of the best small towns in the country by BudgetTravel Magazine.

Canton High School, founded as Collinsville High School in 1854, is a small, high-quality institution with an enrollment of 480 students in grades 9-12. Accredited by NEASC, Canton High School offers a full complement of advanced and varied academic opportunities, co-curricular clubs, and strong athletic programs.

### CANTON MASTERY PROJECT

All seniors participate in an individual project of choice of breadth and depth, in which they will explore an interest or passion not otherwise included in their academic curriculum. The semester-based course earns one credit and culminates in a school-wide celebration and presentation of all projects.

### EXTENDED CURRICULAR OFFERINGS

- ◇ VHS online learning for credit: enrichment opportunities in courses not otherwise offered
- ◇ Half-day program in fine arts in conjunction with area magnet school
- ◇ AP/ECE programs for college credit at University of Connecticut

### COURSE LEVELS

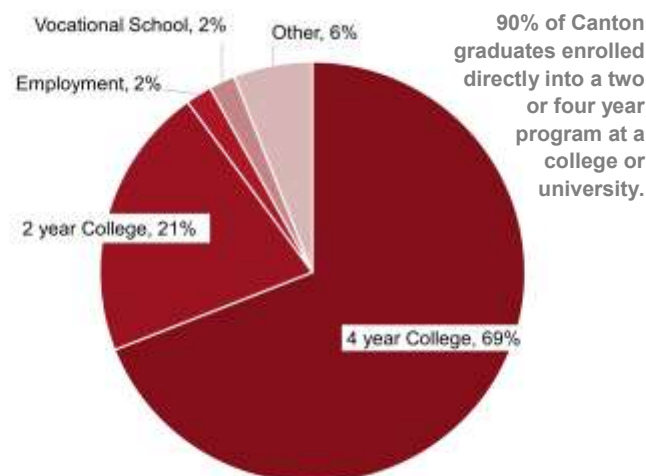
AP/ECE.....Most competitive college preparatory  
Honors.....Very competitive college preparatory  
College Preparatory.....Competitive college preparatory

## ACADEMIC REQUIREMENTS AND SYSTEM OF GRADING

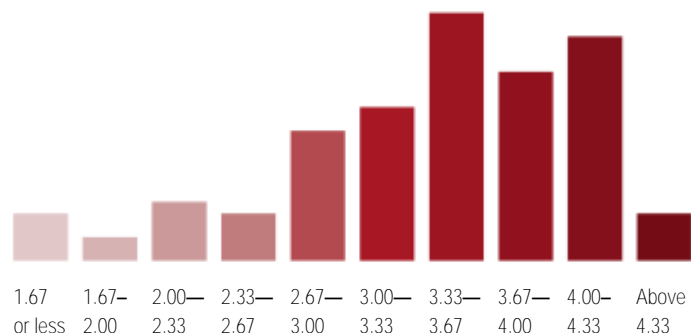
### CREDIT DISTRIBUTION REQUIREMENTS: CLASS OF 2026

English	4 credits	Canton Mastery Project	.5 credit
Math	3 credits	Health & Wellness/PE	2 credit
Social Studies	3 credits	Visual/Performing Arts	.5 credit
Science	3 credits	Electives	7 credits
World Language	2 credits		
<b>TOTAL CREDITS 25</b>			

## OUTCOMES



## CLASS OF 2026 SIX SEMESTER GPA



### WEIGHTED SCALE: QUALITY POINTS

A+	4.33	B+	3.33	C+	2.33	D+	1.33
A	4.0	B	3.0	C	2.0	D	1.0
A-	3.67	B-	2.67	C-	1.67	D-	.67

AP= +1 point

H= +.5 point

### CLASS OF 2026

High	4.66
Median	3.49
Low	0.85

# STANDARDIZED TESTING: SPRING 2025

## SAT

Connecticut has adopted the SAT Exam as the state assessment tool for all juniors. Scores represent Class of 2026 "School Day" SAT exam.

All eligible Canton High School students participated.

STATE "SCHOOL DAY" MARCH 2025	CANTON	STATE
Evidence Based Reading and Writing	562	497
Mathematics	524	472
TOTAL	1086	969

## ACHIEVEMENTS & RECOGNITIONS

### PSAT

Commended Scholars.....1

## ADVANCED PLACEMENT EXAMS

ADVANCED PLACEMENT	1	2	3	4	5	TOTAL EXAMS
Number of Exams	1	19	61	102	38	221
Percentage of Total Exams	0%	9%	28%	46%	17%	100%
Number of AP Students	1	19	54	77	26	133 students

SUBJECT TOTALS	1	2	3	4	5	TOTAL EXAMS
2-D Art and Design				1		1
Biology			6	9	1	16
Calculus AB		1		6	2	9
Chemistry			6	6	1	13
Comparative Government and Politics		1	8	7	4	20
Computer Science A					1	1
English Language and Composition		2	1	4	8	15
English Literature and Composition			2	10	6	18
Environmental Science		2	8	2	2	15
European History				1		1
Macroeconomics				1		1
Microeconomics					1	1
Music Theory		1	1	2	1	5
Physics 1		1	2	10	1	14
Psychology				3		3
Spanish Language and Culture			3			3
Statistics		1	14	12	1	28
United States History			2	11	7	20
World History: Modern		10	8	17	2	37

All students have the opportunity to participate in advanced placement classes.

## CLASS OF 2025 COLLEGE & UNIVERSITY ACCEPTANCES

American University	Marymount Manhattan College	The University of Tampa
Assumption University	McGill University	The University of Tennessee-Knoxville
Auburn University	Mercer University	The University of Western Ontario
Ball State University	Merrimack College	Trent University
Baylor University	Miami University-Oxford	Tufts University
Bentley University	Misericordia University	Tunxis Community College
Bowling Green State University-Main Campus	Morgan State University	Union College (NY)
Bradley University	Mount Holyoke College	University of Colorado Boulder
Bridgewater State University	Nazareth University	University of Colorado Denver
Bryant University	New Mexico State University -Main Campus	University of Connecticut
Butler University	North Carolina State University at Raleigh	University of Connecticut at Hartford
CT State Community College - All Campuses	Northeastern Illinois University	University of Connecticut-Stamford
Cal Poly	Northeastern University	University of Dayton
Central Connecticut State University	Nova Southeastern University	University of Delaware
Champlain College	Oklahoma City University	University of Florida
Clark University	Pace University,	University of Guelph
Clarkson University	Westchester Campus	University of Hartford
Clemson University	Pennsylvania State University-Penn State Main Campus	University of Maine
Coastal Carolina University	Plymouth State University	University of Maryland-College Park
College of Charleston	Post University	University of Massachusetts-Amherst
Colorado State University-Fort Collins	Providence College	University of Massachusetts-Boston
Connecticut College	Purdue University-Main Campus	University of Massachusetts-Dartmouth
Curry College	Quinnipiac University	University of Massachusetts-Lowell
Dartmouth College	Ramapo College of New Jersey	University of Mississippi
DePaul University	Rensselaer Polytechnic Institute	University of New England
Dean College	Rhode Island College	University of New Hampshire -Main Campus
East Carolina University	Rider University	University of New Haven
Eastern Connecticut State University	Rochester Institute of Technology	University of North Carolina at Greensboro
Eastern University	Roger Williams University	University of North Dakota
Embry-Riddle Aeronautical University-Daytona Beach	Rutgers University-New Brunswick	University of Pittsburgh-Pittsburgh Campus
Embry-Riddle Aeronautical University-Prescott	SUNY College at Geneseo	University of Pittsburgh-Rhodes Island
Emerson College	SUNY Cortland	University of Rochester
Emmanuel College	Sacred Heart University	University of Saint Joseph
Endicott College	Saint Anselm College	University of Scranton
Fairfield University	Saint Francis University	University of South Carolina-Columbia
Farmingdale State College	Saint Joseph's University	University of Southern Maine
Ferris State University	Saint Peter's University	University of Toronto
Florida Atlantic University	Saint Xavier University	University of Vermont
Florida Institute of Technology	Salem State University	Ursinus College
Florida State University	Salve Regina University	Valparaiso University
Fordham University	Seton Hall University	Vassar College
Franciscan University of Steubenville	Siena College	Villanova University
Franklin Pierce University	Slippery Rock University of Pennsylvania	Virginia Commonwealth University
Franklin and Marshall College	Southern Connecticut State University	Virginia Tech
George Mason University	Southern New Hampshire University	Wesleyan University
Georgia Southern University	Springfield College	Western Connecticut State University
Hampshire College	St. John Fisher University	Western New England University
High Point University	St. John's College	Westfield State University
Hofstra University	St. Lawrence University	Worcester Polytechnic Institute
Holy Cross College	Stonehill College	Wright State University-Main Campus
Indiana State University	Stony Brook University	Xavier University
James Madison University	Suffolk University	
Johnson & Wales University-Providence	Susquehanna University	
Keene State College	Syracuse University	
Kent State University at Kent	Temple University	
Lafayette College	Texas A & M University-College Station	
Lasell University	Texas Christian University	
Le Moyne College	The Catholic University of America	
Lehigh University	The University of Alabama	
Lesley University		
Long Island University - Post		
Loyola University Maryland		
Manhattan College		
Marist College		